



Rushcliffe
Borough Council



Rushcliffe Borough Council

Diversity of Rushcliffe – Focus on Dementia

Community Development Scrutiny Group
Derek Hayden & Alex Julian



RUSHCLIFFE - GREAT PLACE • GREAT LIFESTYLE • GREAT SPORT



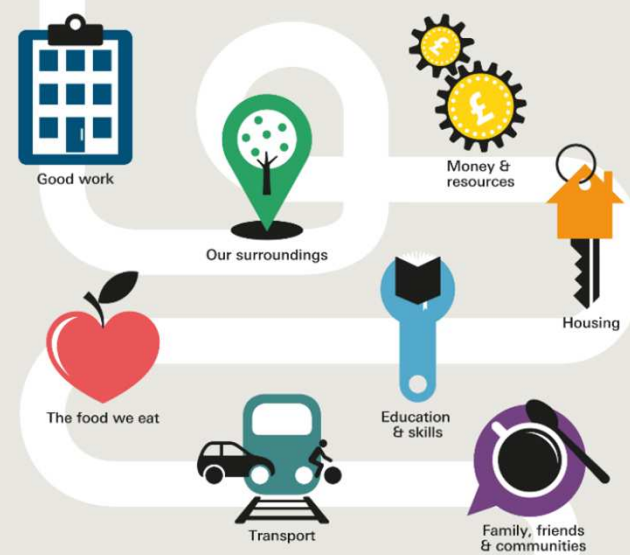
What makes us healthy?

Our health, wellbeing and ultimately life expectancy is determined by..

What makes us healthy?

AS LITTLE AS **10%** of a population's health and wellbeing is linked to access to health care.

We need to look at the bigger picture:



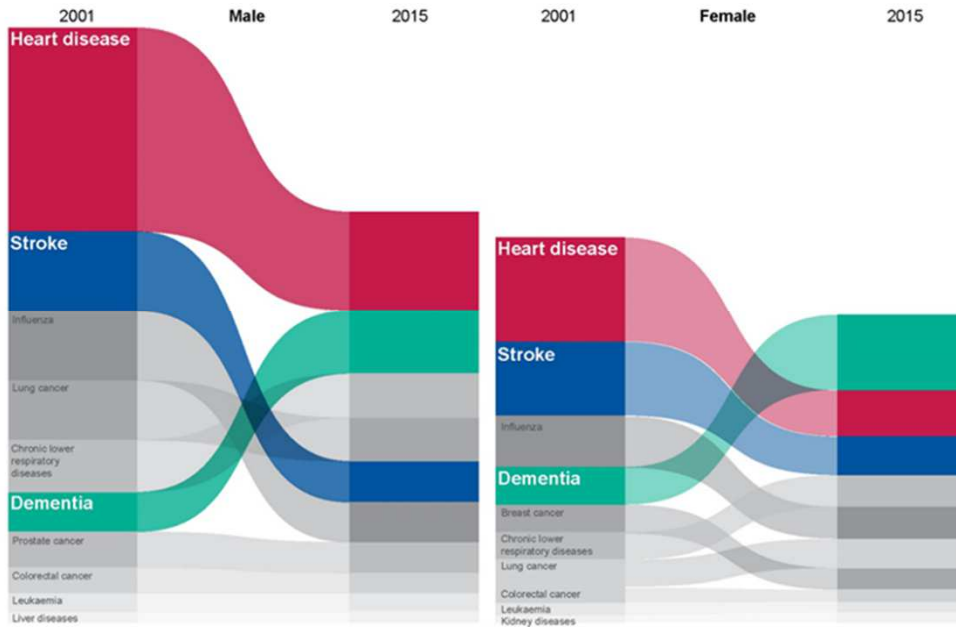
But the picture isn't the same for everyone.

The healthy life expectancy gap between the most and least deprived areas in the UK is: **19** YEARS

As a Local Authority we have a significant part to play in addressing these determinants and ensuring equitable access to our services.



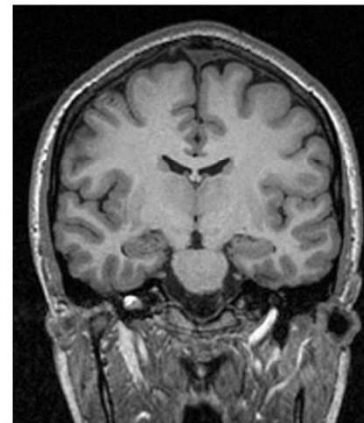
Context



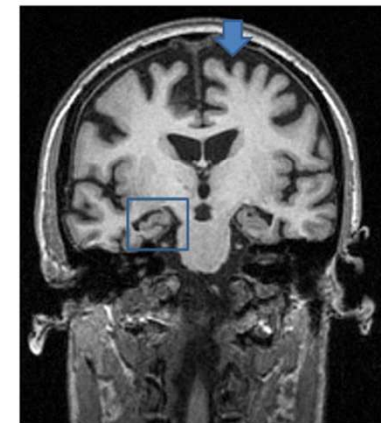
Dementia Friendly General Practice Information and Awareness Session



Healthy brain



Brain with advanced Alzheimer's disease



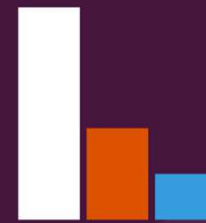
Reference: Carer Information and Support Programme, Facilitator's Slides, Alzheimer's Society



Dementia in the UK

One million

people in the UK will have dementia by 2025 and this will increase to two million by 2050.



Dementia has **higher health and social care costs** (£11.9bn) than cancer (£5.0bn) and chronic heart disease (£2.5bn) combined.



The numbers of people with dementia are predicted to rise up to 35% by 2025 and 146% by 2050.

£26bn

The current cost of dementia in the UK.



Dementia in Rushcliffe

- 1% of Rushcliffe residents (1160)
- 5% of Rushcliffe residents 65+
- 1760 residents with dementia

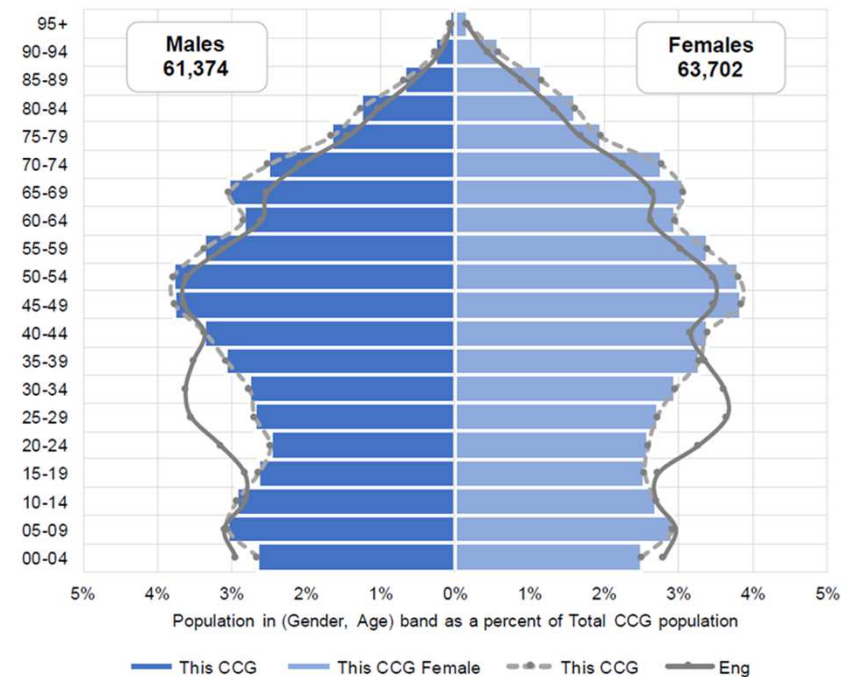
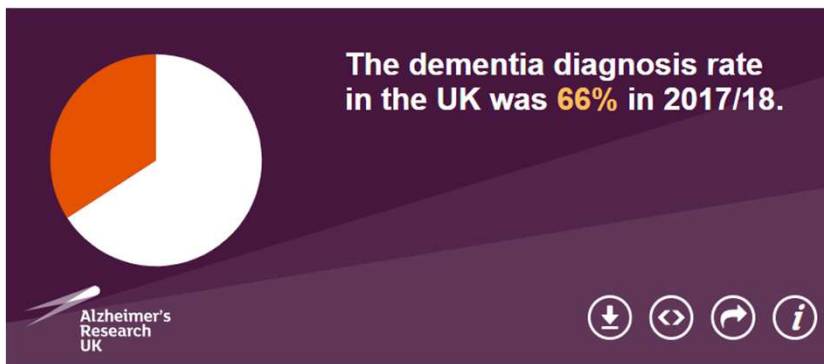


Figure 1: Population pyramid for Rushcliffe (NHS Digital, 2016)



What we've done

- Delivered 15 GP specific Dementia Friends sessions to Rushcliffe practices.
- Delivered 5 Dementia Friends sessions to local community groups.
- Delivered the Rushcliffe Memory Walk at Rushcliffe Country Park raising over £3000
- Delivered Dementia Friends Session to the Leadership Forum, Councillors and Leisure Centre staff
- Supported Cotgrave Leisure Centre to set up Dementia Friendly Swimming
- The authority has connected with local Dementia Café's to understand their challenges and seek feedback regarding Council services.



Dementia Action



Dementia Friendly Swimming

Join us for a sessions at:

Cotgrave Leisure Centre
Wednesday's 1pm - 3pm
Starting from the 7th November 2018

DAA Dementia Action Alliance




Rushcliffe Memory Walk
Saturday 20th October, 2018
Rushcliffe Country Park, Mere Way, Ruddington, Nottingham, NG11 6JS
Gates open 12.30pm - Walk start time 2pm


Rushcliffe Clinical Commissioning Group, PartnersHealth (Rushcliffe GP Practices) and Rushcliffe Borough Council have partnered with Alzheimer's Society to organise a charity walk to raise awareness of those living with dementia. You will be able to choose between a 2km and a 5km walk supported by friendly staff and stewards (wheel chairs are also suitable for this event). There will be tea/coffee and cakes for sale with all donations going to the Alzheimer's Society to support vital research.

Please join us - Every single step will help change the lives of people affected by Dementia, now and in the future.

For more information or registration form, please contact Lisa Harrold on 0115 8837816. Please either complete and return the registration form to your GP practice or register on-line via Eventbrite <https://www.eventbrite.com/e/rushcliffe-memory-walk-tickets-452010921673>





RUSHCLIFFE - GREAT PLACE ■ GREAT LIFESTYLE ■ GREAT SPORT

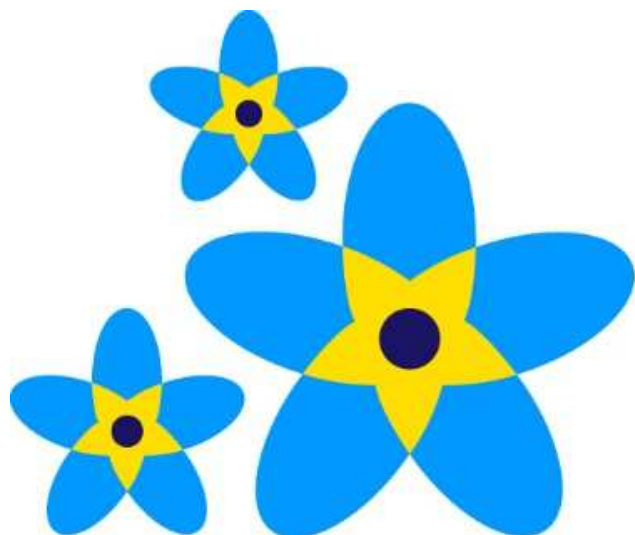


What we plan to do

- Delivery of Dementia Action Event during Dementia Action Week – Friday 24th May 2019
- Multi-agency event involving Alzheimer’s Society, Rushcliffe CCG, Notts County Council, Gedling Borough Council, Institute of Mental Health, University of Nottingham, Notts Police, Notts Fire & Rescue, Dementia Café volunteers, carer’s and service users.
- Delivery of a dementia friendly group at a local eco farm, providing opportunities for residents with dementia to engage in animal therapy, support an allotment and provide respite for carers.
- Exploring opportunity to implement care home games involving adapted physical activity sessions led by care home staff – to support the elderly to get active. ENGAGE



Accredited as...



Working to become
**Dementia
Friendly**
2018-2019

RUSHCLIFFE - GREAT PLACE ■ GREAT LIFESTYLE ■ GREAT SPORT



Dementia Friendly

